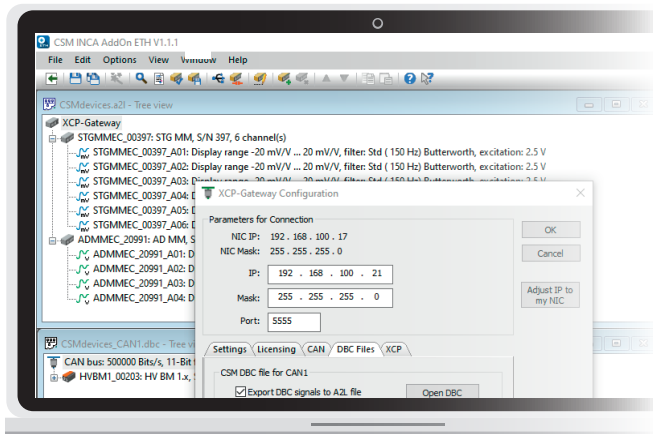


CSM INCA AddOn ETH



Key features

- ▶ Integration of CSM measurement modules directly in INCA (configuration & measurement operation)
- ▶ Support of CSM measurement modules up to 4 MHz measurement data rate per channel
- ▶ Support of CSM CAN measurement modules up to 1 kHz measurement data rate per channel
- ▶ User-defined sensor and signal databases
- ▶ Module- and AddOn-specific defaults



Product description

CSM INCA AddOn ETH allows the configuration and measurement operation of CSM ECAT measurement modules and modules with direct XCP-on-Ethernet output in ETAS INCA. Measurement data rates up to 4 MHz per channel are supported. In addition, it is possible to operate multiple CSM CAN measurement modules by using the XCP-Gateway CAN interfaces allowing measurement data rates of up to 1 kHz per channel.

The configuration of the measurement modules is performed by means of a customized user interface. Frequently used sensor data can be stored in a user-defined sensor database. Measurement range, sensor excitation and signal conversion can be configured with just one click - simply select the required sensor from the database.

As a supplement to the sensor database, a signal database, containing channel name and comments, can now be specified. These standard names can be assigned to the corresponding channels.

CSM INCA AddOn ETH provides options to define module- and AddOn-specific defaults and to save them in template files. These default settings can, for example, be transferred to multiple computers for a company-wide installation.

In combination with an ES891 and an XCP-Gateway (as of HW rev. C), the synchronization with ECU data via IEEE 1588 V.2 (PTP) in INCA is supported as an option.

Requirements

- ▶ INCA as of version 7.5.0, system requirements depend on the INCA version.¹
- ▶ The measurement chains can be operated directly at the fast ethernet port of a PC, a network switch or an ethernet port of ETAS ES592, 593, 595 or ES891.²
- ▶ The latest firmware versions are installed on the XCP-Gateways and measurement modules used.

Supported devices

Protocol converter

- ▶ XCP-Gateway as of HW rev. B

EtherCAT® measurement modules

- ▶ HV AD4, AD4
- ▶ HV IEPE3
- ▶ HV STG4, STG6
- ▶ HV BM 1.x
- ▶ HV BM 1.2+S
- ▶ HV BM 3.1
- ▶ HV SAM1 evo

XCP measurement modules

- ▶ HV AD4 XW 4000
- ▶ HV BM 3.1 OBC
- ▶ HV BM 3.3

CAN bus measurement modules

- ▶ via XCP-Gateway CAN interfaces

¹ For information on older INCA versions please contact our sales department.

² When using XCP-Gateway 4S pro and HV BM 3.3 a 1 Gbit connection is mandatory.



CSM GmbH

Raiffeisenstr. 36
70794 Filderstadt
Germany

Technical Questions:
www.csm.de/service-and-support

Sales Contact:
www.vector.com/contact

Part of the Vector Group



All trademarks mentioned are property of their respective owners.
Specifications are subject to change without notice.
CANopen® and CiA® are registered community trademarks of CAN in Automation e.V.
EtherCAT® is registered trademark and patented technology,
licensed by Beckhoff Automation GmbH, Germany.