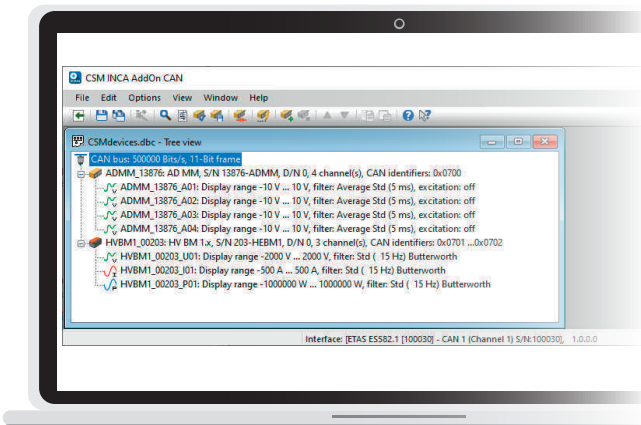


CSM INCA AddOn CAN



Key features

- ▶ Integration of CSM measurement modules directly in INCA (configuration & measurement operation)
- ▶ Support of CSM CAN measurement modules up to 10 kHz measurement data rate per channel
- ▶ TEDS support
- ▶ User-defined sensor and signal databases
- ▶ Module- and AddOn-specific defaults



Product description

CSM INCA AddOn CAN allows the configuration and measurement operation of CAN measurement modules directly in ETAS INCA. In addition to CSM MiniModules (AD, TH, etc.), the CSM HV measurement modules (incl. HV BM), the CSM pressure sensors and the exhaust gas measurement modules from ECM are also supported. Measurement data rates up to 10 kHz per channel are possible.

The configuration of the measurement modules is performed by means of a customized user interface. With TEDS-enabled CSM CAN measurement modules, configuration data from connected sensors equipped with TEDS chips can be automatically applied to the channel configuration. Using the electronic datasheet for sensor configuration saves time and reduces the risk of errors.

Frequently used sensor data can be stored in a user-defined sensor database. Measurement range, sensor excitation and signal conversion can be configured with just one click – simply select the required sensor from the database.

As a supplement to the sensor database, a signal database, containing channel name and comments, can now be specified. These standard names can be assigned to the corresponding channels.

CSM INCA AddOn CAN provides options to define module- and AddOn-specific defaults and to save them in template files. These default settings can, for example, be transferred to multiple computers for a company-wide installation.

Requirements

- ▶ INCA as of version 7.5.0, system requirements depend on the INCA version.¹
- ▶ The latest firmware versions are installed on the measurement modules used.

Supported modules

CAN measurement modules

- | | | |
|-------|-------|-------|
| ▶ AD | ▶ CNT | ▶ PT |
| ▶ STG | ▶ TH | ▶ OUT |

CSM pressure sensors

CAN HV measurement modules

- | | | |
|---------|--------------|---------|
| ▶ HV AD | ▶ HV DTemp-P | ▶ HV PT |
| ▶ HV TH | | |

HV Breakout Modules (and their derivatives) in CAN operation

- | | | |
|-----------------|---------------|---------------|
| ▶ HV BM 1.x | ▶ HV BM 1.2+S | ▶ HV BM 3.1 |
| ▶ HV BM 3.1 OBC | ▶ HV BM 3.3 | ▶ HV SAM1 evo |

Exhaust gas measurement modules

- | | | |
|--------------|-----------------------|-----------------------|
| ▶ LambdaCANc | ▶ NH ₃ CAN | ▶ NO _x CAN |
|--------------|-----------------------|-----------------------|

¹ For information on older INCA versions please contact our sales department.



CSM GmbH

Raiffeisenstr. 36
70794 Filderstadt
Germany

Technical Questions:
www.csm.de/service-and-support

Sales Contact:
www.vector.com/contact

Part of the Vector Group



All trademarks mentioned are property of their respective owners.
Specifications are subject to change without notice.
CANopen® and CiA® are registered community trademarks of CAN in Automation e.V.
EtherCAT® is registered trademark and patented technology,
licensed by Beckhoff Automation GmbH, Germany.