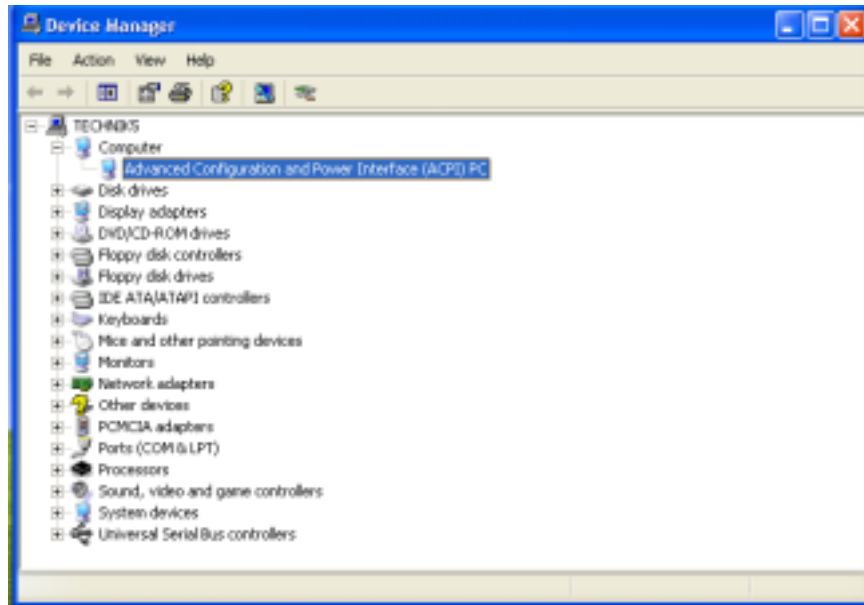


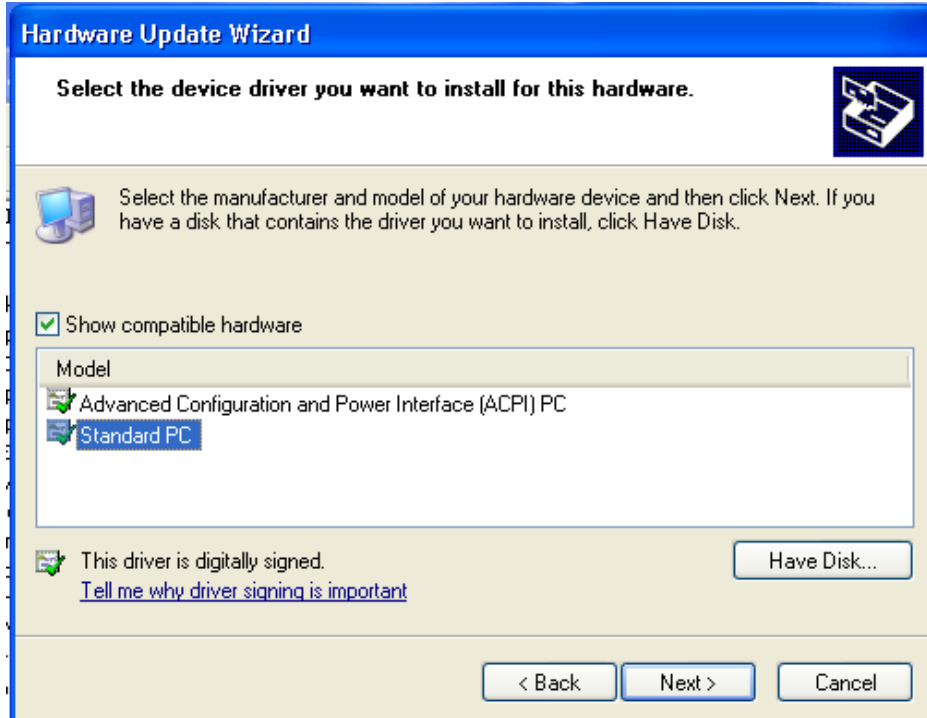
## Changing from ACPI-PC to Standard-PC (Windows XP)

1. Go to the Device manager (click the right mouse-button on “My Computer”, choose properties, change to Hardware then to Device manager. Click on Computer).

**Or:** Click “Start”->”Control Panel”->”System”->”Hardware”->”Device Manager”



2. Open the Computer properties and go to Drivers. Click on “Update Driver” and choose “Install from a list or specific location (Advanced)”. Click on “Don’t search. I will choose the driver to install” and choose the “Standard PC”. Click next to proceed.



3. Windows is telling you that it’s not recommend to choose that driver. Continue anyway. Now you have to restart your PC, afterwards the PCI-Drive should work fine.