

INCA AddOn

- ▶ Integration of all CSM CAN bus modules directly in INCA
- ▶ Support of ETAS CAN bus hardware (ES590/591, ES690, ES580, ...)
- ▶ User interface is conform to INCA
- ▶ Optimized CAN bus load during data recording with INCA
- ▶ For INCA Version 5.2.1 and higher
- ▶ For INCA Version 6.0 enhanced functionality

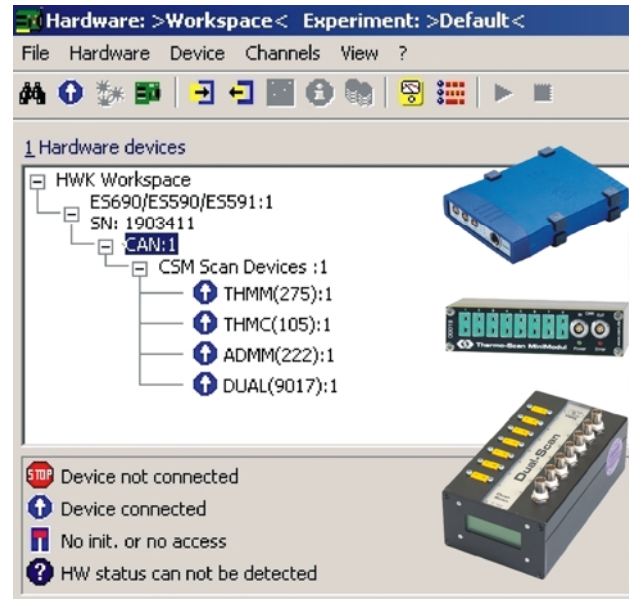
Since 2005 CSM is member of the *ETAS Partner Program* for CAN based measurement hardware in INCA. Result of this partnership is the **CSM INCA AddOn**, which is enhanced and maintained permanently.

This allows **INCA users a very comfortable operation with CSM CAN bus MiniModules and xx-Scan Modules in INCA.**

INCA AddOn Features

The INCA AddOn integrates the CSM measurement modules, using the ETAS Third Party Interface. The configuration of the modules with the CSM Config Tool and import of the CANdB file in INCA is not required anymore. Instead of that the modules

- ▶ **are configured directly in INCA** and configuration data is saved in the workspace of INCA.
- ▶ Changes of e.g. channel names or sampling rates can be done directly in INCA and are effective immediately.
- ▶ **Search** for and initialization of connected modules can be done directly in INCA.
- ▶ After initialization and selection of the measurement channels the experiment can be started immediately. Only **measurement modules** with selected measurement channels are sending CAN messages on the bus. All other modules keep in idle mode.
- ▶ All configuration data entered in INCA is stored also in the module.



The CSM CAN measurement modules are connected to the ETAS CAN hardware. This hardware generates, completely independent from PC or Notebook, the time stamp for the measurement data. This gives in connection with the real time characteristics of the CAN bus a very accurate time basis. ETAS CAN bus interfaces are supported, in particular

- ▷ **ES590/591, ES690, ES580 (CAN-Link) and ES1000**

Support of new measurement modules is guaranteed anytime with INCA AddOn Software Updates. The INCA AddOn is available as single and company license. Silent setup is also possible.

At present the following CSM CAN bus measurement modules are supported:

- ▷ **MiniModules:**
 - **Thermo-Scan:** THMM 8, THMM 16, THMC
 - **AD-Scan:** ADMM 4 and ADMM 8
 - **PT-Scan**
 - **TTL-Freq**
- ▷ **AD-Scan, Thermo-Scan, Dual-Scan, SMB4CAN**

CSM GmbH

Raiffeisenstr. 34, D-70794 Filderstadt
Phone: +49 711 77964-20 Fax: +49 711 77964-40
mailto: info@csm.de

www.csm-products.com

